

Alloys	Forms	Main Uses	Characteristics
1050	Rolled: Plate, Sheet, Flat, Circles, Coil	Packaging, Panelling, Chemical industry, Vessels, Lighting, Architectural applications	An unalloyed non-treatable rolled aluminum, High mechanical properties are not required
1060			
1100			
2011	Extruded: Rod, Bar	Parts produced on repetition machines	Strong alloy: commercial/ high-speed machining
2024	Rolled: Plate, Sheet	Aircraft parts, luggage, Architectural applications	A high strength material of adequate workability has largely superseded 2017 for structural applications
3003	Rolled: Plate, Sheet, Flat, Coil, Circles	Architectural applications, Heat sink, Utensils	Slightly better strength than 1100, good workability, weldability and corrosion resistance
3105	Rolled: Flat, Coil	Architectural applications, Color aluminum sheet, Bottle cap	Slightly better strength than 3003, good workability and corrosion resistance
5052	Rolled: Plate, Sheet, Flat, Coil, Circles	Marine, Transport and Architectural applications,	Medium tensile range, high corrosion resistance, good workability, weldability and strength
5005			
5074			
5083	Extruded: Rod, Bar, Solids, Some hollows & tubes Rolled: Plate, Sheet, Flat, Coil, Circles	Marine and Transport applications, Pressure vessels, Storage tanks	High strength and corrosion resistance, good weldability
6061	Extruded: Rod, Bar, Solids, Some hollows & tubes Rolled: Plate, Sheet, Flat, Coil, Circles	Marine, Transport and Architectural applications, Aircraft landing mats	High weldability, resistance corrosion and electrical conductivity
6063	Extruded: Rod, Bar, Solids, Hollows, Tubes	Architectural, Trim and Transport applications	Medium tensile range, high corrosion resistance, good workability, weldability and strength
7075	Extruded: Rod, Bar, Solids, Some hollows & tubes Rolled: Plate, Sheet, Flat, Coil, Circles	Aircraft parts, Snow board	Excellent strength & hardness.

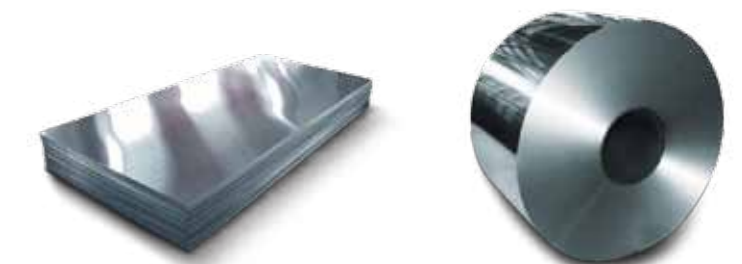


# Aluminum Alloy Products

Professional  
Reliable  
Efficient

**YIEH CORP.**  
www.yieh.com

Aluminum Alloy Plate & Sheet  
Aluminum Alloy Coil & Strip  
Aluminum Foil Product  
Aluminum Alloy Extrusion



**YIEH CORP.**  
www.yieh.com

# Company Profile



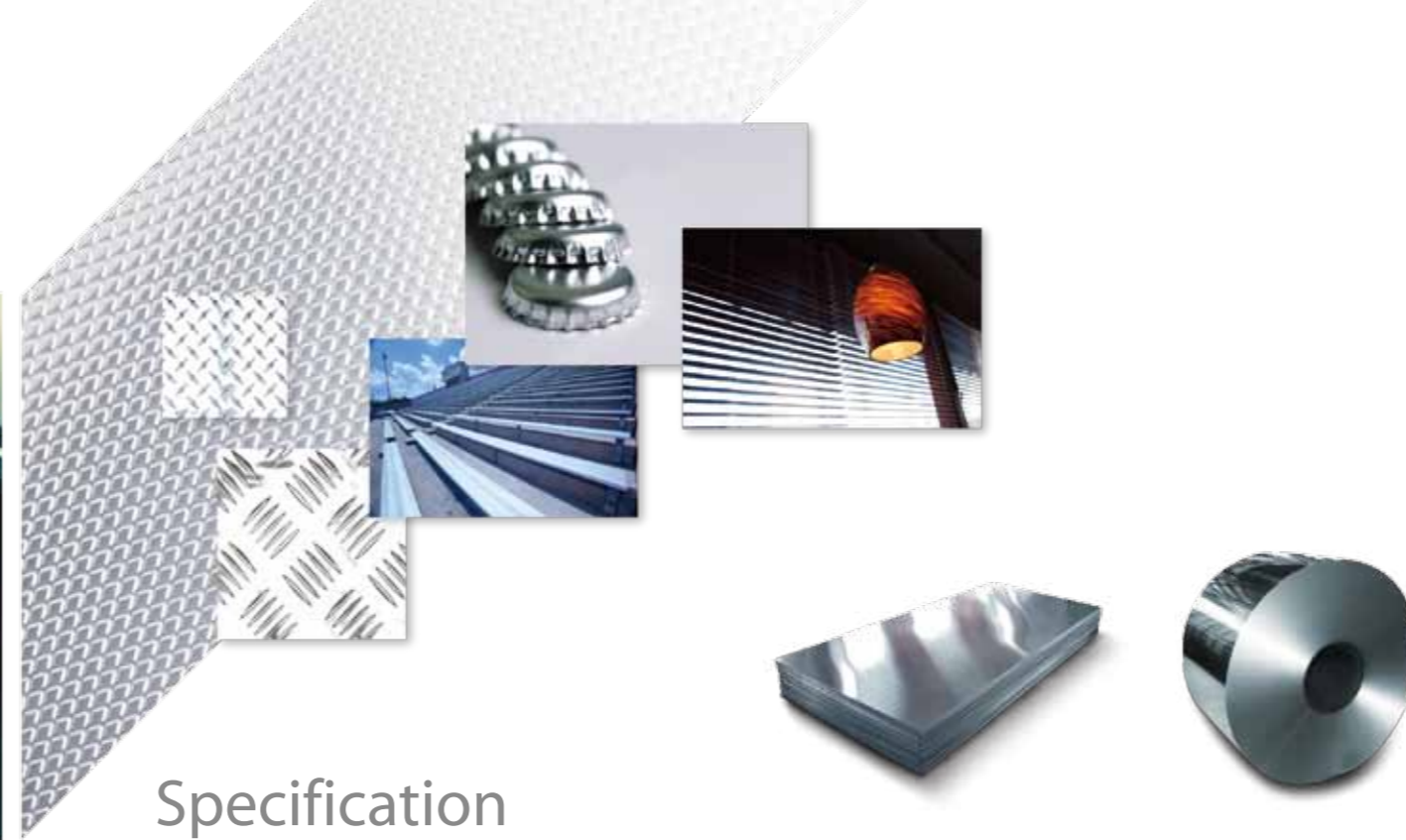
## About Yieh Corp.

Yieh Corp., established in 1997, is the world's leading steel company. The head quarter of Yieh Corp. is situated in Kaohsiung, Taiwan and the branch is located in Shanghai, China.

Yieh Corp. belongs to E-United Steel Group, which is the largest privately owned steel producer in Taiwan. Our group has four business units, including steel manufacturing industry, education, health care and estate & entertainment business.

## Diverse Product

As a professional steel supplier, Yieh Corp. successfully integrates all of the steel resources in China and Taiwan to meet clients' various demand. For the aluminum product, we mutually cooperate with aluminum affiliates to build a strong supply chain with diverse steel solutions as horizontal integration for customers, including aluminum alloy plates, sheets, strips, bars, foils, extrusions and so on.



## Specification

### Aluminum Alloy Plate & Sheet

Alloy	1xxx, 2xxx, 3xxx, 5xxx, 6xxx, 7xxx, 8xxx series
Temper	O, F, H12, H14, H16, H18, H19, H22, H24, H26, H32, H34, H36, H38, H111, H112, H321, T3, T4, T5, T6, T7, T351, T451, T651, T851
Standard Size	Thickness: 0.2~300mm Width: 500~2500mm Length: 500~10000mm

### Aluminum Alloy Coil & Strip

Alloy	1xxx, 2xxx, 3xxx, 5xxx, 6xxx, 8xxx series
Temper	O, F, H12, H14, H16, H18, H19, H22, H24, H26, H32, H34, H112
Standard Size	Thickness: 0.18~8mm Width: 30~2000mm

### Aluminum Foil Product

Alloy	1235, 8011, 1145
Temper	O, H18, H19, H22, H24, H26
Standard Size	Thickness: 0.005~0.2mm Width: 200~1470mm I.D: 76.2~200mm Max O.D: 1450mm

Other specifications are also available up to request

# Aluminum Alloy Extrusion

The aluminum alloy extrusion is capable to make the range of diagonal up to 406mm.

- Industrial Extrusion
- Seamless Extruded Tube / Profile
- Porthole Extruded Tube / Bar / Profile / Plate
- Precision Drawn Tube / Bar / Profile
- Rod / Wire / Flat Wire

